

NEW BEDFORD PORT AUTHORITY APRIL 2022 PROJECT UPDATE

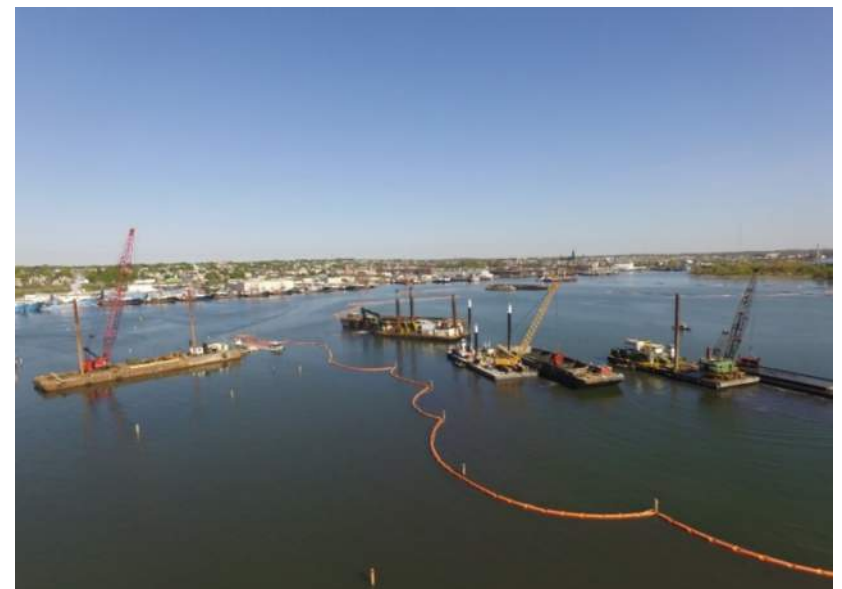


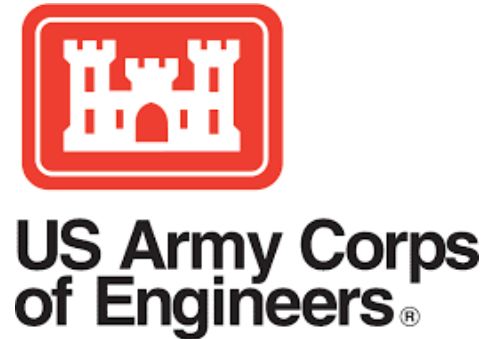
Photo by Ed Pepin

Presentation



- Introduction
- Current Projects Updates (Design & Construction)
 - Bottom of CAD Cell No. 4/North Terminal/Lower Harbor CAD Cell Capping - Stage 2
 - Phase V Dredging – Stage 3
 - Revere Copper
 - North Terminal 2 – Stage 4

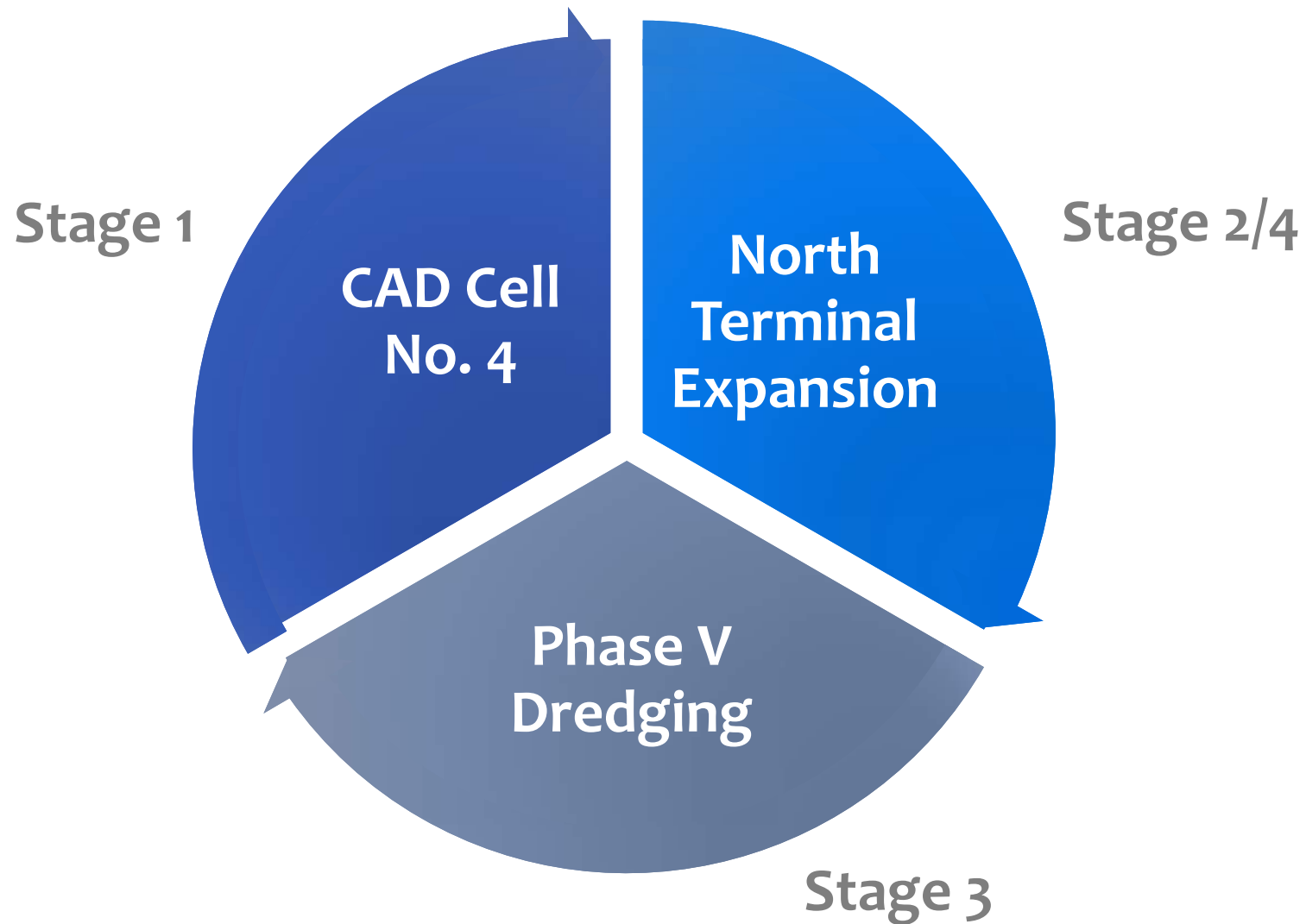




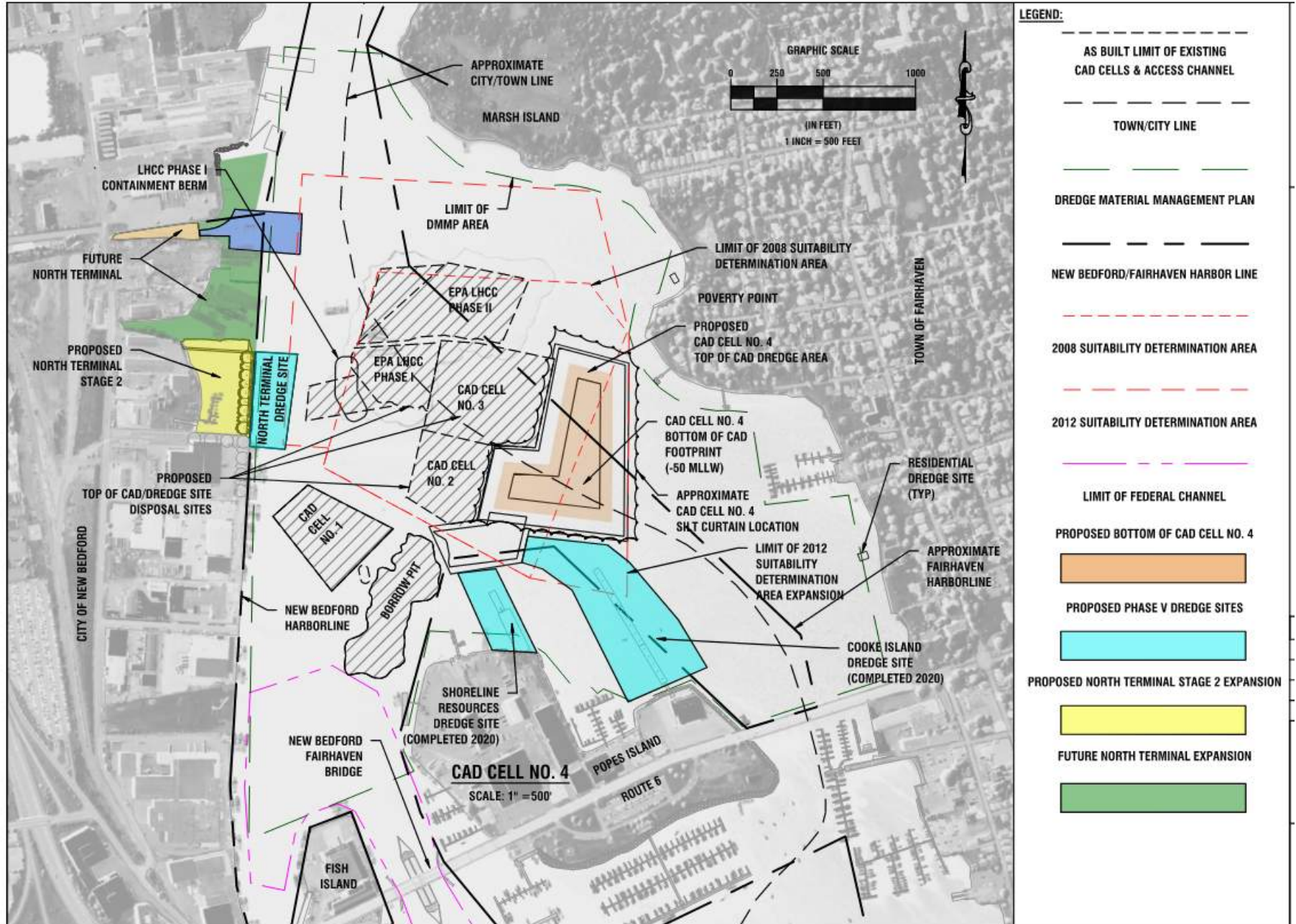
Current Project Updates

- Bottom of CAD Cell No. 4/North Terminal/Lower Harbor CAD Cell Capping - Stage 2
- Phase V Dredging – Stage 3
- Revere Copper

CAD Cell No. 4 – North Terminal – Phase V Dredging Project Statement of Work



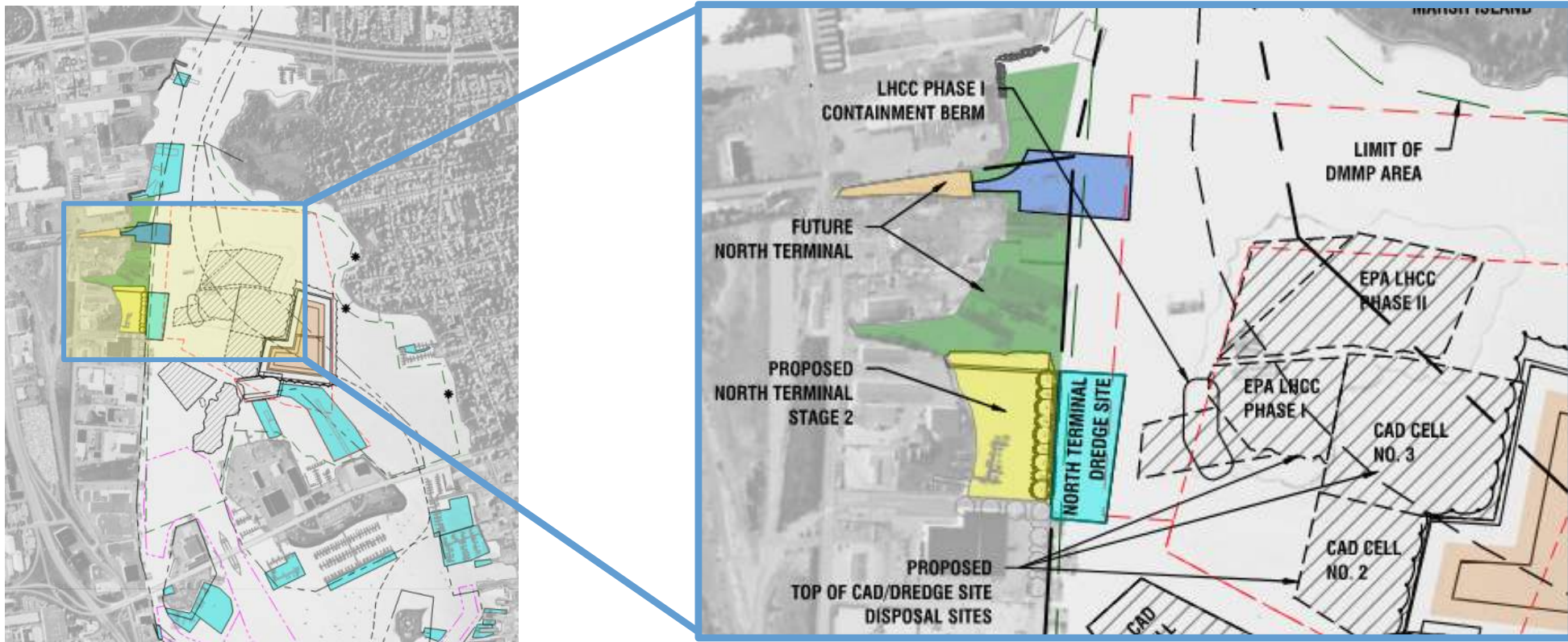
Stage 1 & 2 - Update on CAD Cell #4/North Terminal



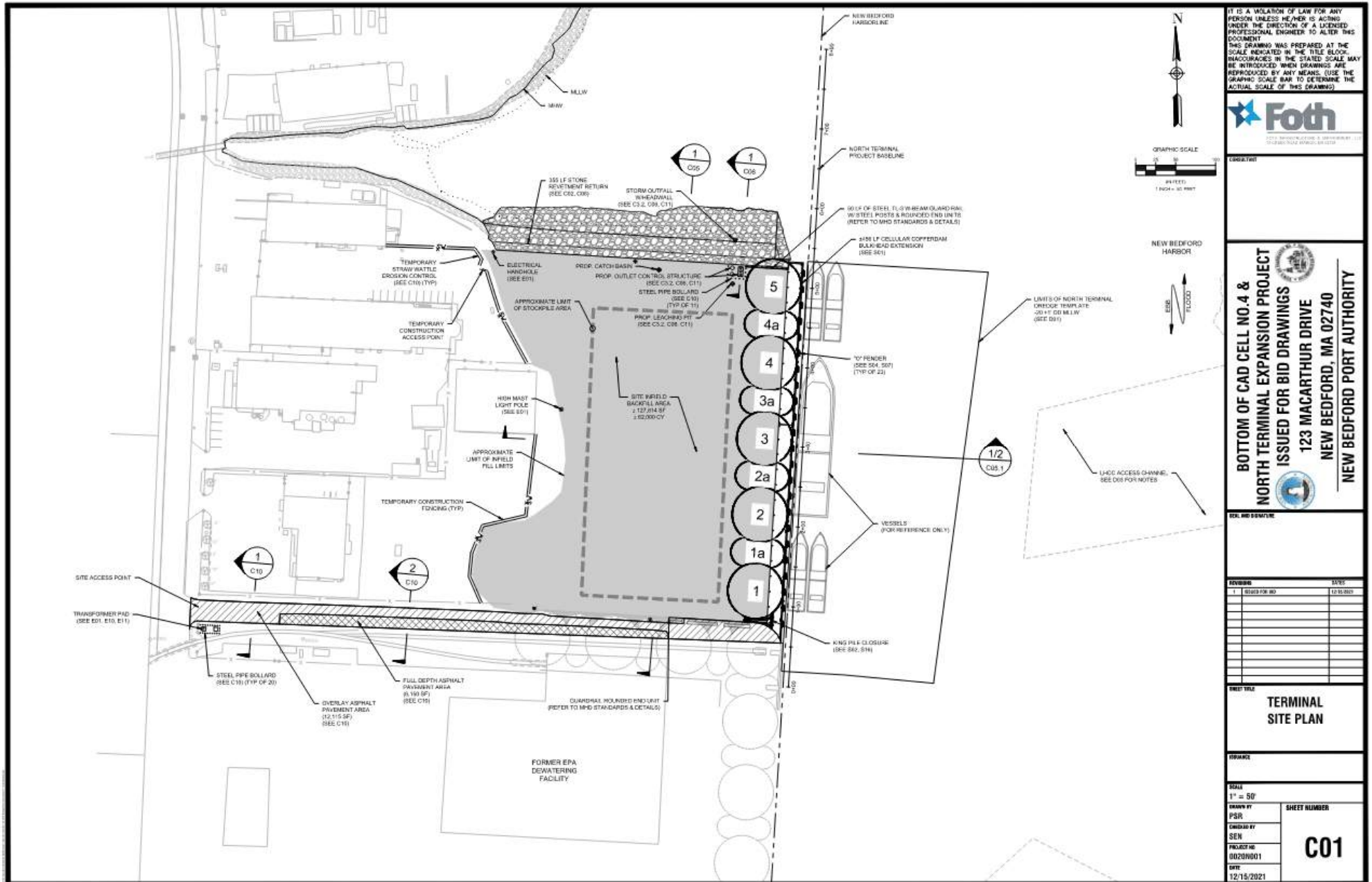
Stage 2 - North Terminal Expansion

- Terminal Extension = +/-455 LF of bulkhead / commercial berth space
- Terminal Area = +/-130,000 SF (3 acres) (capping existing sediments)
- BUILD Grant for \$15.4 M
- Beneficial re-use +/-100,000 cy from BOC

North Terminal



North Terminal Expansion



IT IS A VIOLATION OF LAW FOR ANY PERSON UNLESS HE/HER IS ACTING UNDER THE DIRECTION OF A LICENSED PROFESSIONAL ENGINEER TO ALTER THIS DOCUMENT.
 THIS DRAWING WAS PREPARED AT THE SCALE INDICATED IN THE TITLE BLOCK. DIMENSIONS IN THE STATED SCALE MAY BE INTRODUCED WHEN DRAWINGS ARE REPRODUCED BY ANY MEANS. (USE THE GRAPHIC SCALE BAR TO DETERMINE THE ACTUAL SCALE OF THIS DRAWING).



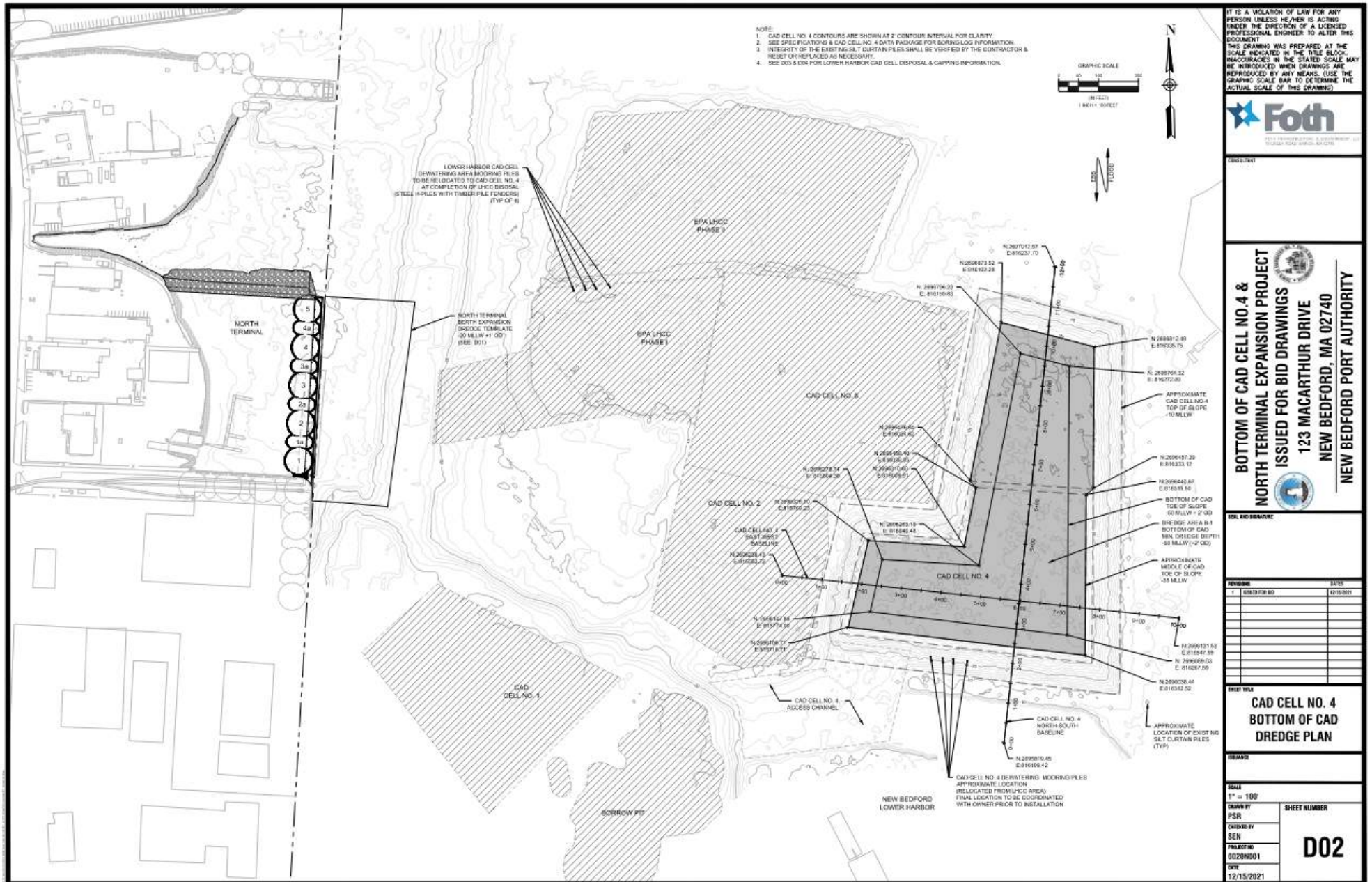
BOTTOM OF CAD CELL NO. 4 & NORTH TERMINAL EXPANSION PROJECT ISSUED FOR BID DRAWINGS
 123 MACARTHUR DRIVE
 NEW BEDFORD, MA 02740
 NEW BEDFORD PORT AUTHORITY

REVISION	DATE
1 ISSUED FOR BID	12/15/2021

PROJECT TITLE
 TERMINAL SITE PLAN

SCALE 1" = 50'	SHEET NUMBER C01
DRAWN BY PSR	
DESIGNED BY SEN	
PROJECT NO. 02020801	
DATE 12/15/2021	

Bottom of CAD Cell No. 4



IT IS A VIOLATION OF LAW FOR ANY PERSON UNLESS HE/HER IS ACTING UNDER THE DIRECTION OF A LICENSED PROFESSIONAL ENGINEER TO ALTER THIS DOCUMENT

THIS DRAWING WAS PREPARED AT THE SCALE INDICATED IN THE TITLE BLOCK. INACCURACIES IN THE STATED SCALE MAY BE INTRODUCED WHEN DRAWINGS ARE REPRODUCED BY ANY MEANS. USE THE GRAPHIC SCALE BAR TO DETERMINE THE ACTUAL SCALE OF THIS DRAWING.



100% (1/4)

BOTTOM OF CAD CELL NO. 4 & NORTH TERMINAL EXPANSION PROJECT

ISSUED FOR BID DRAWINGS

123 MACARTHUR DRIVE
NEW BEDFORD, MA 02740

NEW BEDFORD PORT AUTHORITY

FOR BID DRAWING

NO.	DESCRIPTION	DATE
1	ISSUED FOR BID	12/15/2021

TITLE: CAD CELL NO. 4 BOTTOM OF CAD DREDGE PLAN

SCALE: 1" = 100'

DRAWN BY: PSR

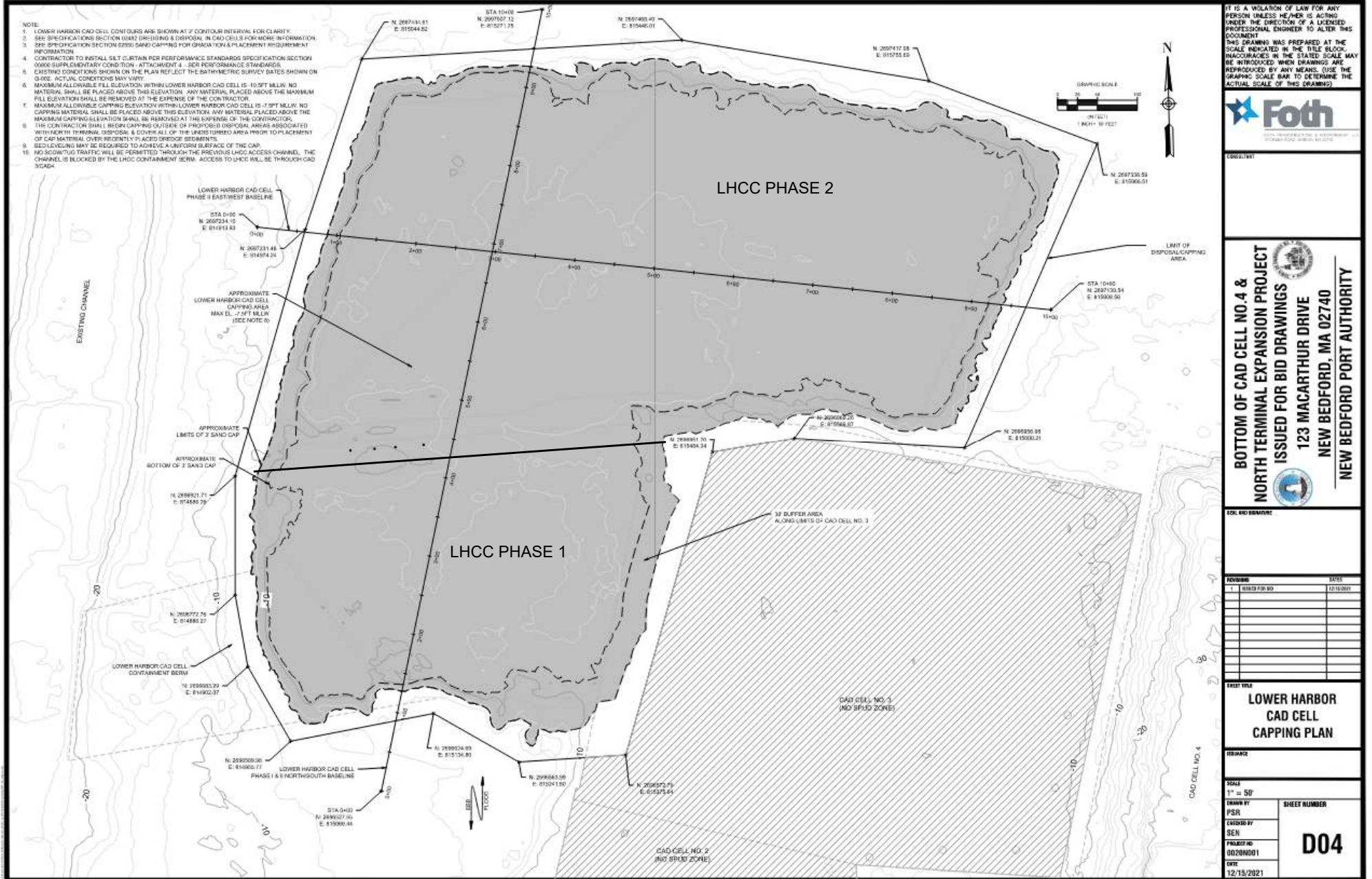
CHECKED BY: SEN

PROJECT NO: 02000001

CITY: 12/15/2021

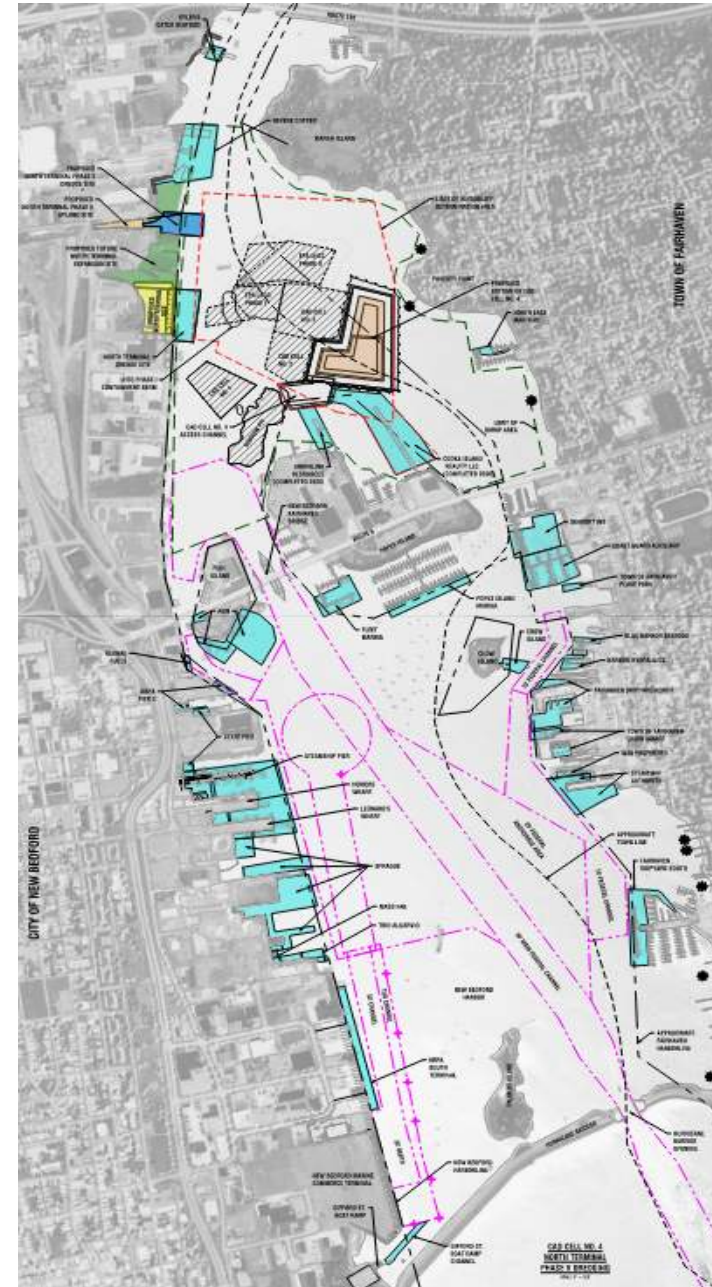
SHEET NUMBER: D02

Lower Harbor CAD Cell Capping



Stage 3 – Phase V Dredging

- 30 Commercial Dredge Sites + 8 Residential Dredge Sites
- Shoreline Resources & Cooke’s Island Dredge Sites completed in Summer 2020
- Sediment sampling completed in Fall of 2021
- Lab analysis pending, expected Spring 2022
- Stage 3 Work Plan submittal, expected Summer 2022
- Stage 3 TSCA Request, Submittal 1 of 5 complete
- Stage 3 Construction, expected Fall 2023 (Pending Completion of CAD Cell No .4)



NBPA/Phase V Project Schedules

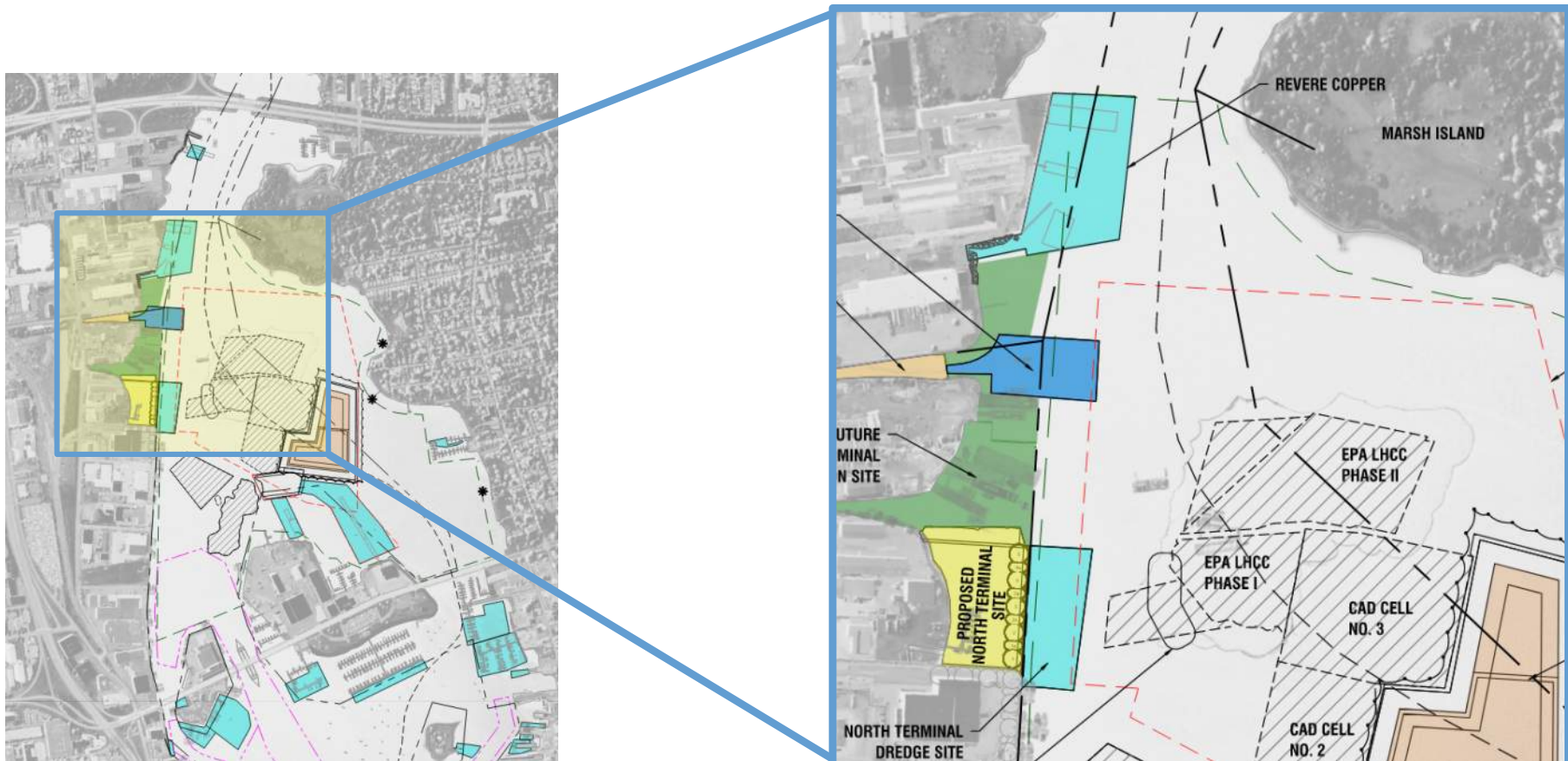
Milestone	Timeline
Stage 1 - CAD Cell Construction (Top & Middle of CAD)	Stage 1 - CAD Cell Construction (Top & Middle of CAD) (Complete October 2020)
Construction Contract for North Terminal Phase 1 Expansion & Bottom of CAD Cell No. 4	March 2022
Stage 2 – North Terminal Expansion	April 2022 – September 2023
Stage 2 - CAD Cell Construction (Bottom of CAD)	August 2022 – June 2023
Stage 2 - North Terminal Dredging	June 2023 – July 2023
Stage 3 - Phase V Dredging Construction	September 2023– July 2024
Stage 4 - North Terminal Phase 2 Expansion	June 2023 – March 2024

NBPA/Phase V Project Questions?

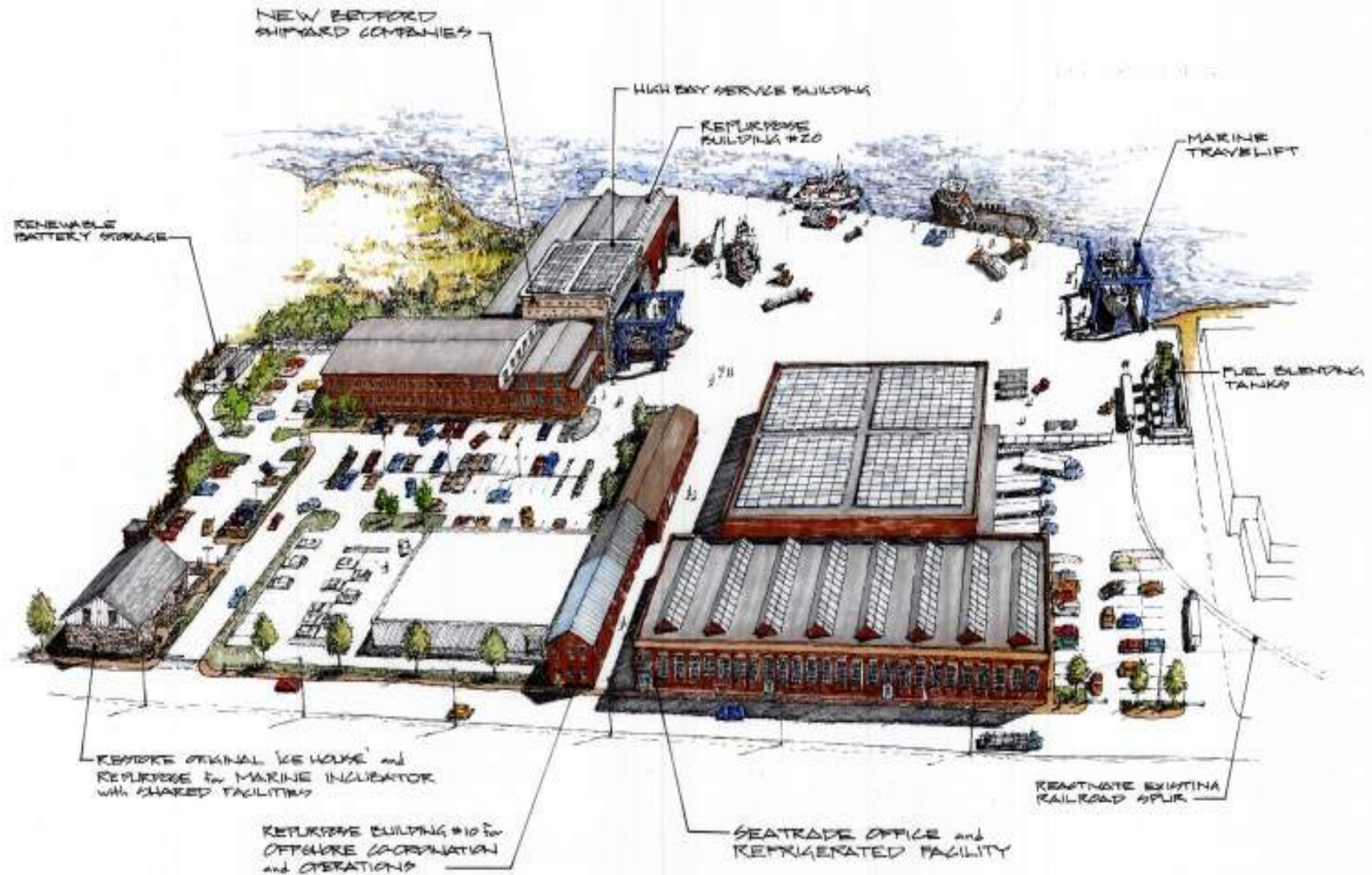


Revere Copper Bulkhead Improvements

- Steel Sheetpile Bulkhead Oversheet = +/-1,000 LF of bulkhead
- Site Improvements for redevelopment as a shipyard facility
- Phase 1 of Construction scheduled to begin in August of 2022 (Bulkhead Installation)
- Phase V Dredge Site Contaminated Sediment Removal = +/- 66,000 CY (+/-200,000 SF)



Multiuse Site Redevelopment



Questions?

